

**NOAM YAISH**

industrial design

**PORTFOLIO**

## נעם יעיש

רח' קרן היסוד 15 א • ירושלים  
 tel:0544-837009 • email: gnoam25@gmail.com

**פרטים אישיים**  
**שנת לידה:** 1980  
**ארץ לידה:** ישראל  
**שפות:** עברית, אנגלית

**לימודים**  
**2010 - היום:** בצלאל, המחלקה לעיצוב תעשייתי  
**1998:** בגרות מלאה, הגימנסיה העברית ירושלים

**תוכנות**  
 solidworks • solidcam • keyshot • photoshop • illustrator • indesign • premier • sketchbook pro

**כישורים**  
 הדמיות • עיצוב מהיר ב solidworks • בניית מודלים • הכנת קבצים לחיתוך לייזר, CNC, הדפסת תלת מימד • תכנון מנגנונים וחלקים זזים • ידע בחשמל, תאורה, סאונד ואקוסטיקה • יכולת לימוד מהירה של תוכנות חדשות • יכולת מחקר ולימוד עצמאי • נסיון בעבודה עם עץ, מתכת, פלסטיק, תבניות, נייר, חומרים מרוכבים, ועוד

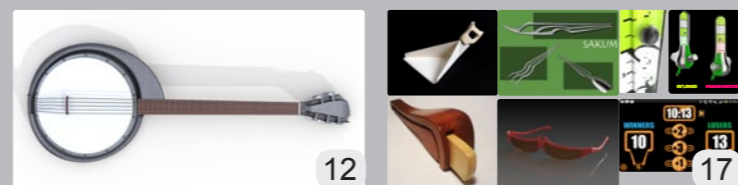
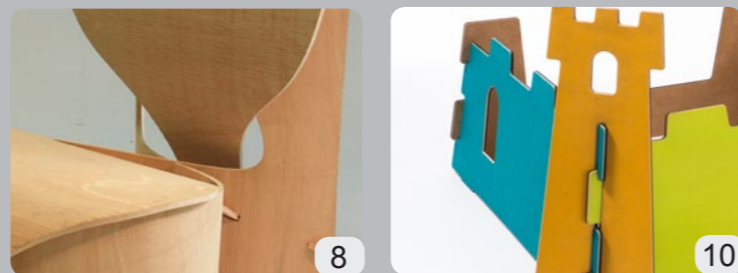
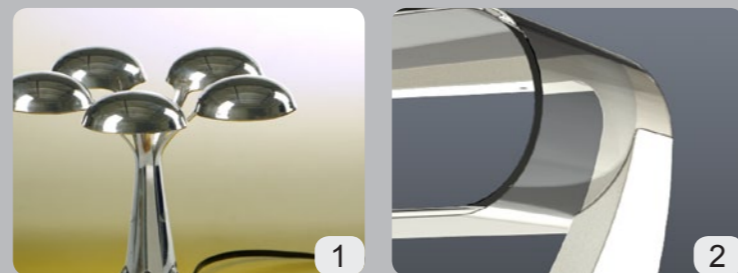
**נסיון תעסוקתי**  
**טכנאי סאונד (2000- היום):** עיצוב סאונד למופעים ומיצבים, אחראי על תכנון, הקמה, הכנה ותפעול מערכות הגברה במופעים ואירועים. עבודה באולפני הקלטות, עריכת סאונד, מיקס ומאסטרינג.

**הזירה הבין תחומית (2000-2005):** אחראי סאונד ווידאו, תפעול ותחזוקת מיצגים, תערוכות, מופעים, תאורה, תפאורה. בניית אביזרים לאמנים ומיצבים. עיצוב תאורה להצגות. בתפקיד מנהל טכני בין השנים 2001-2003.

**עיסוקים נוספים** • מוזיקה • בניית כלי נגינה • אלקטרוניקה

**אתר** <http://www.behance.net/noamyash/>

## CONTENTS:



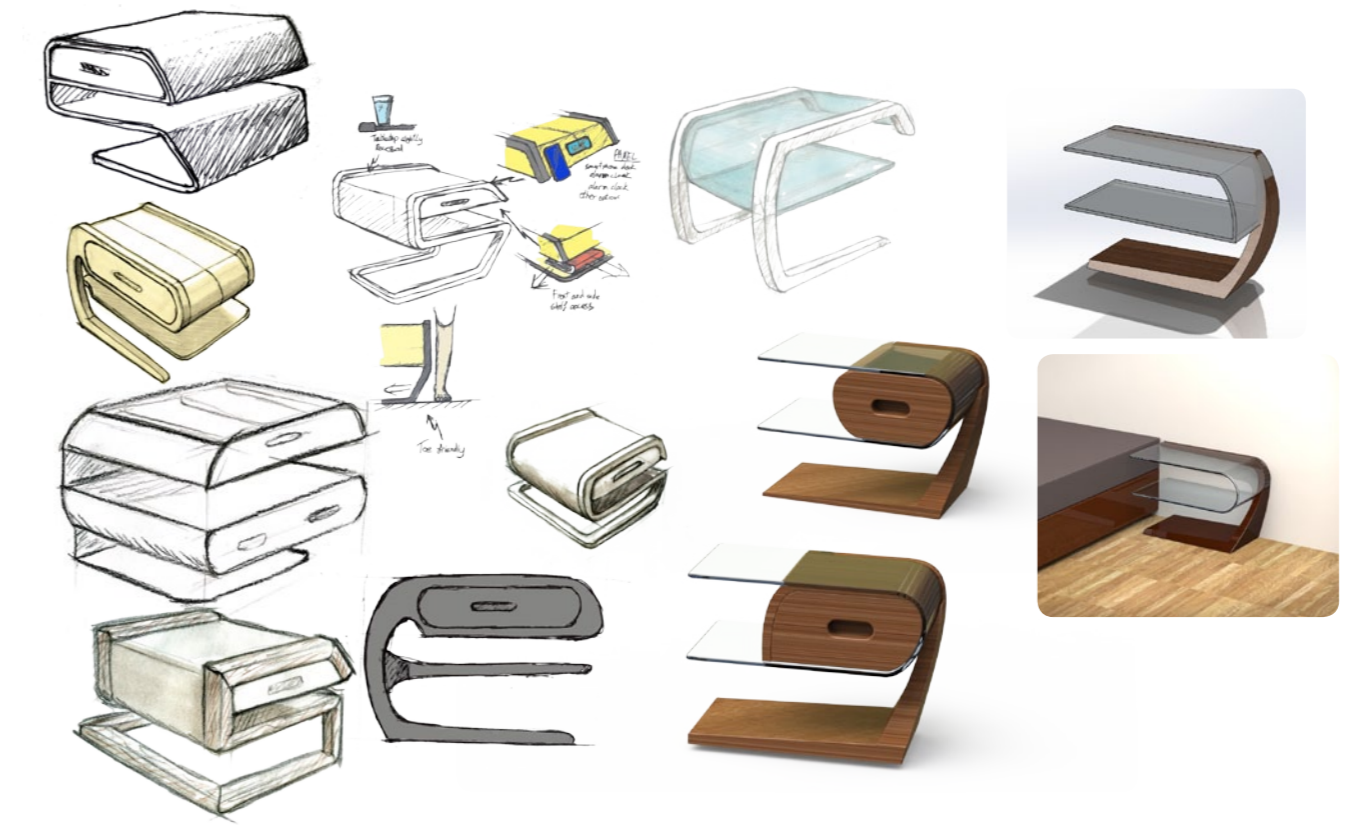
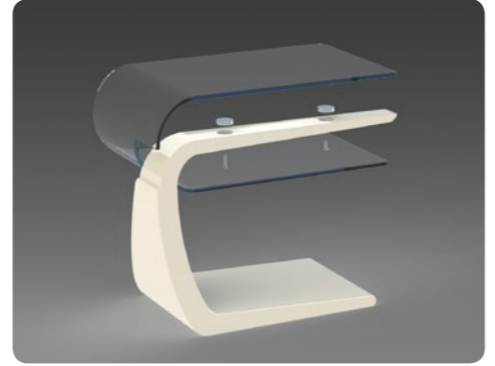
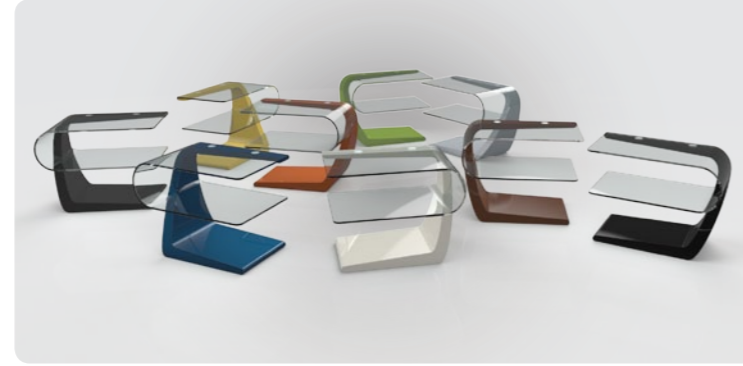
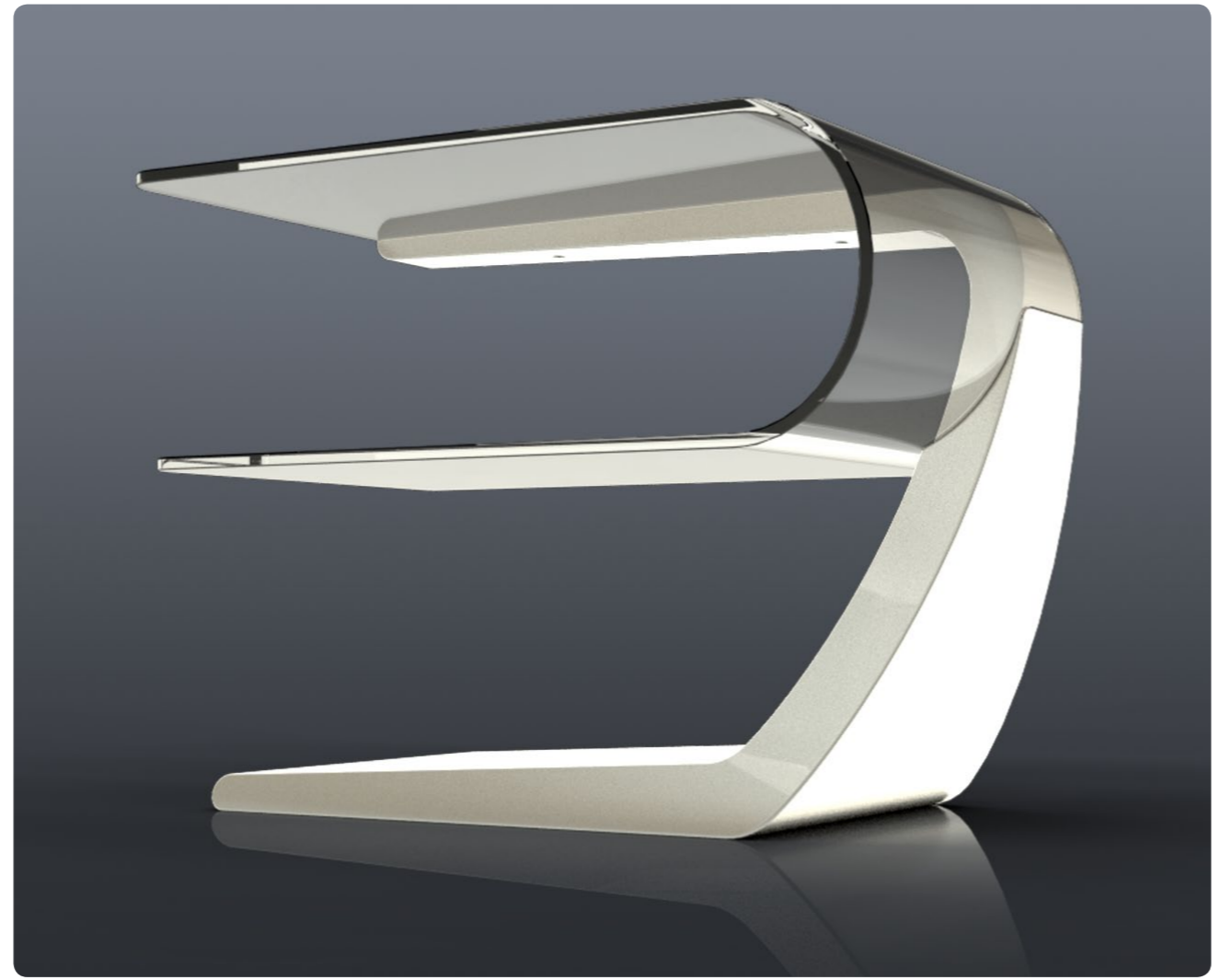
## LADLE LAMP

2010  
 ladles \ wood \ LED \ acrylic



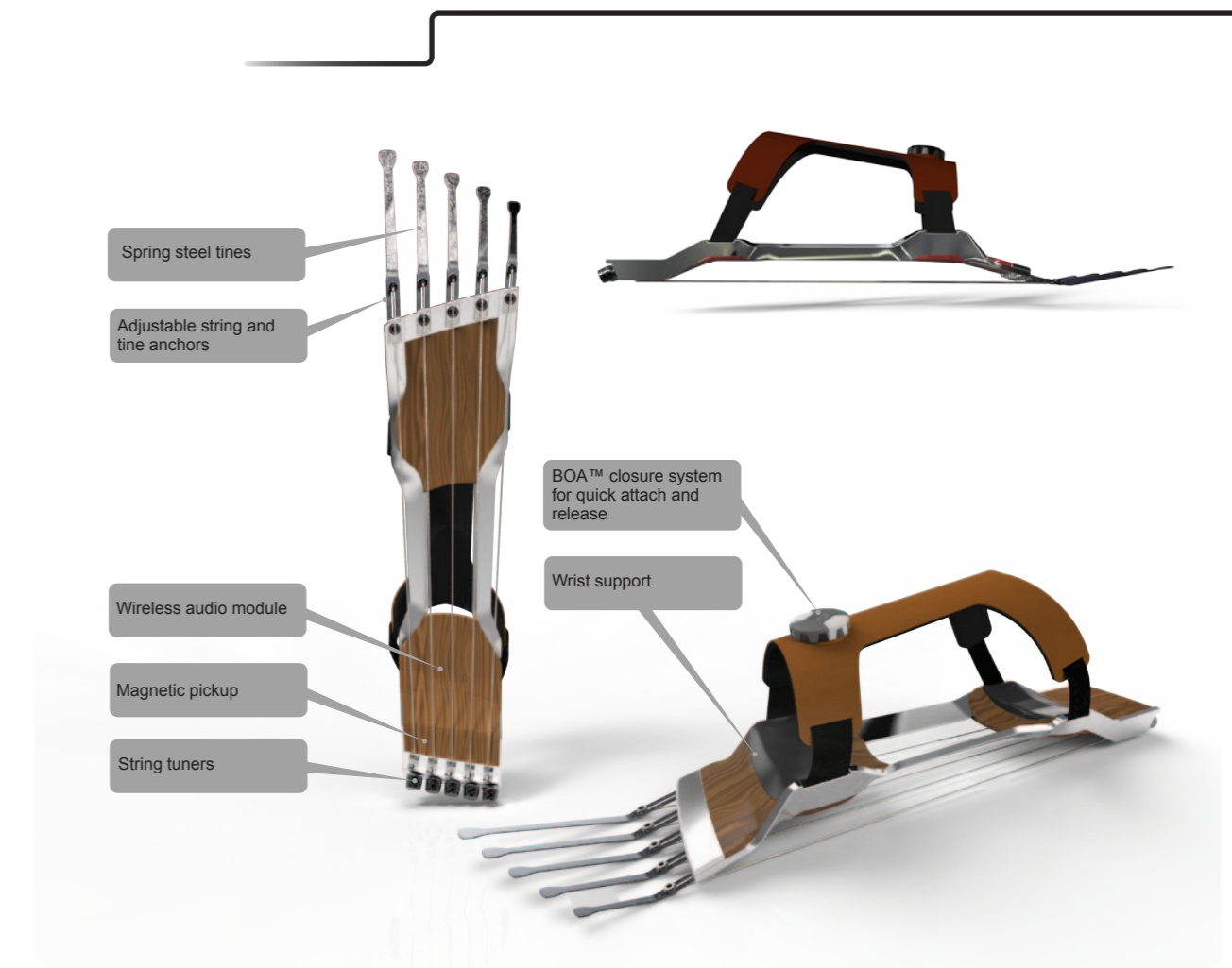
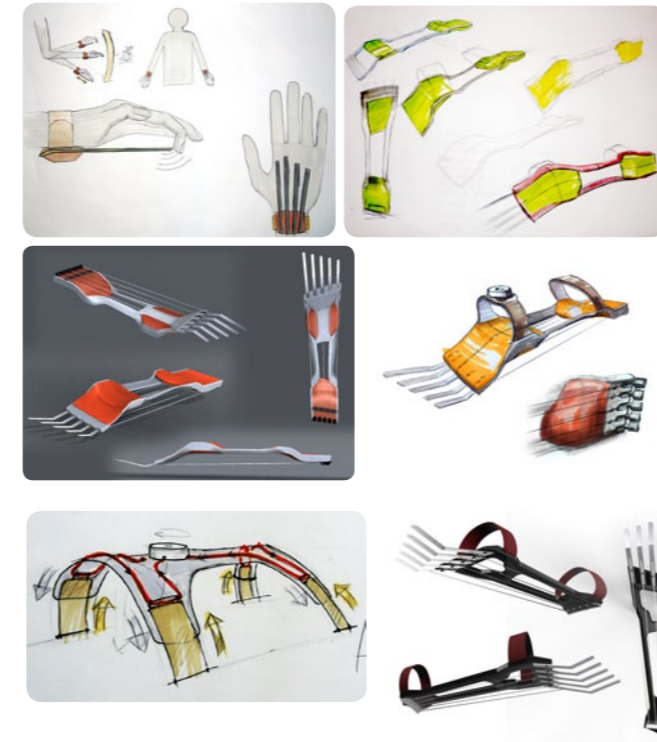
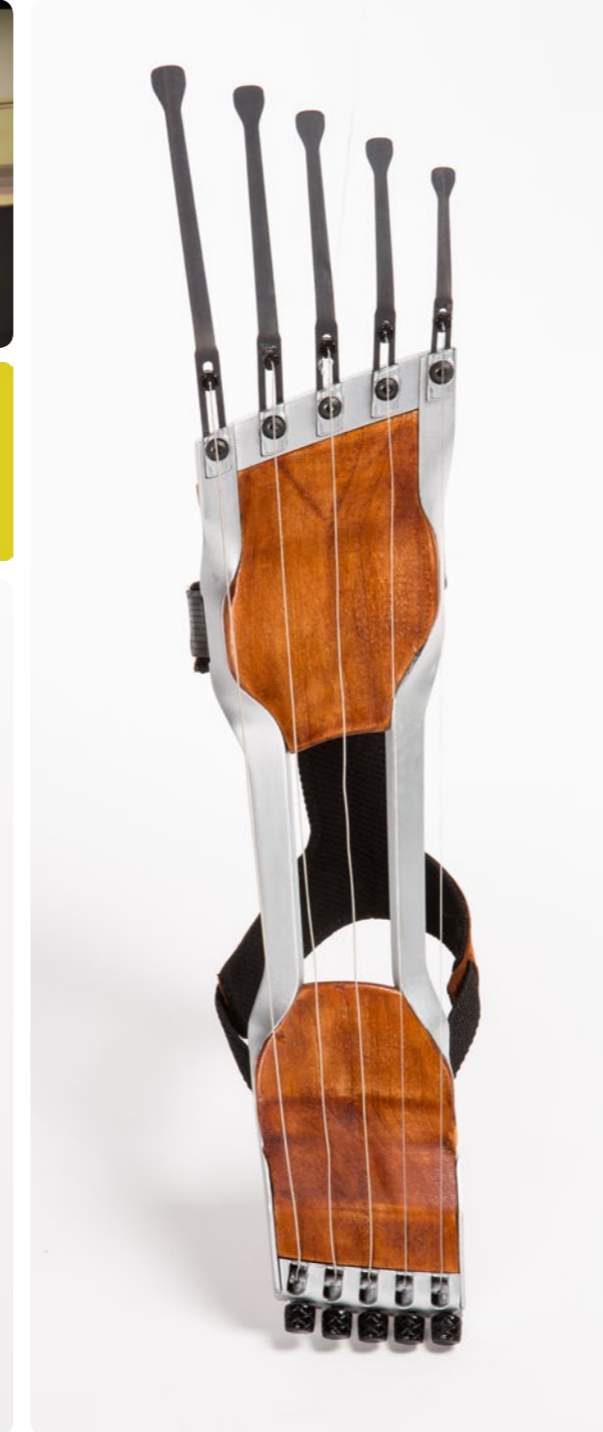
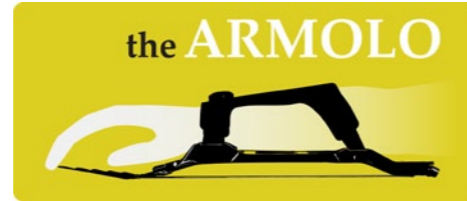
# THE VESSEL

2013 \ ocadu, toronto \ furniture design 2  
glass \ birch plywood



# ARMOLO

2013 \ bezalel \ 3rd year studio: from one to myriads  
a musical instrument



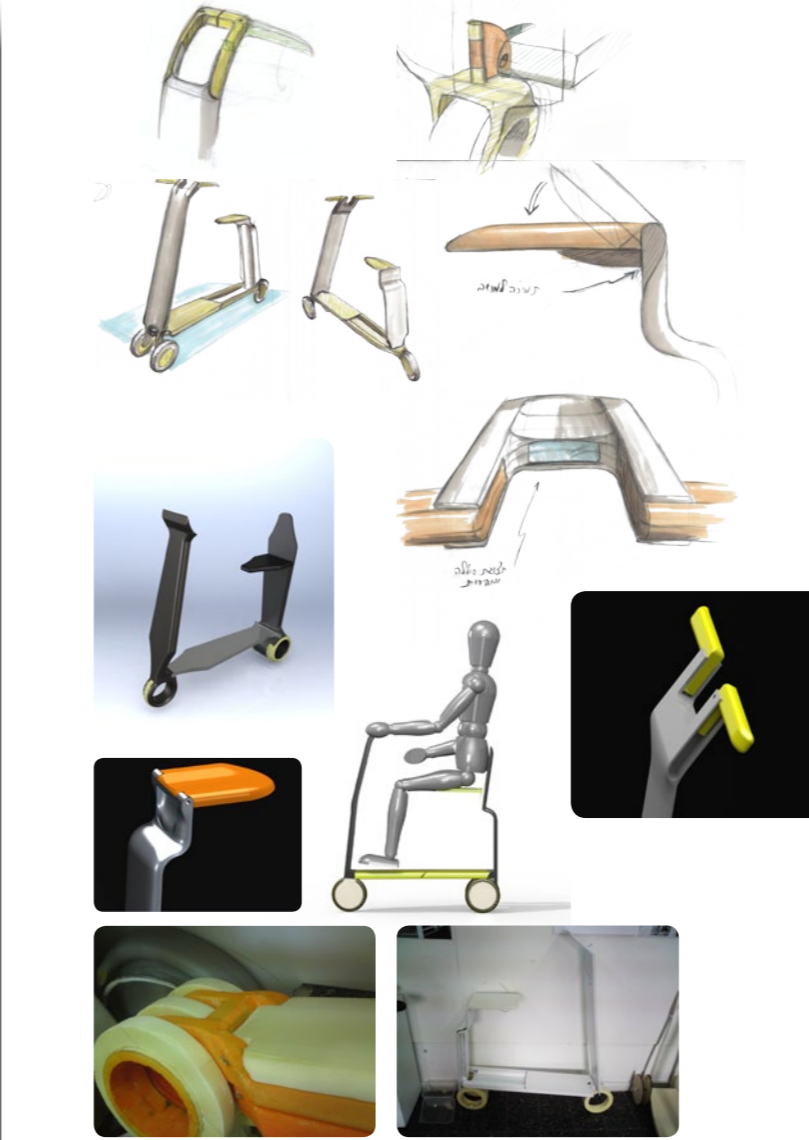
# ELECTRIC SCOOTER

2012 \ bezalel \ 2nd year studio \ sponsored by lexus israel

a "last mile" scooter for daily commuters, encouraging the use of public transport.

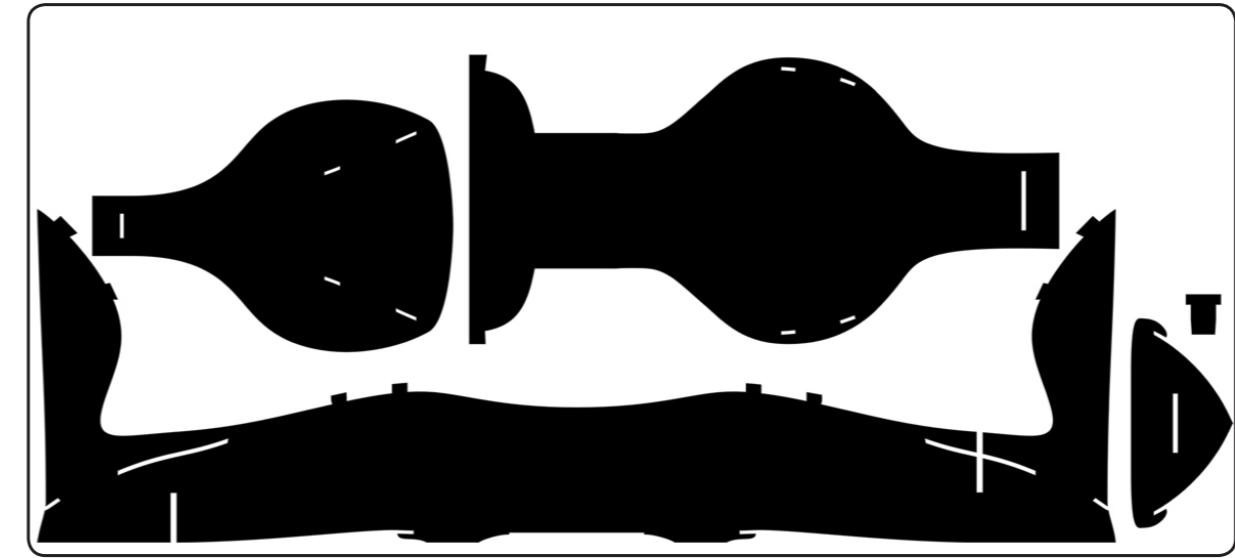
quickly and effortlessly collapsible in to an elegant closed trolley, aesthetically conforming to the modern work environment.

unlike bicycles and other personal vehicles, this scooter can be carried into the workplace and stored by your desk during the day.



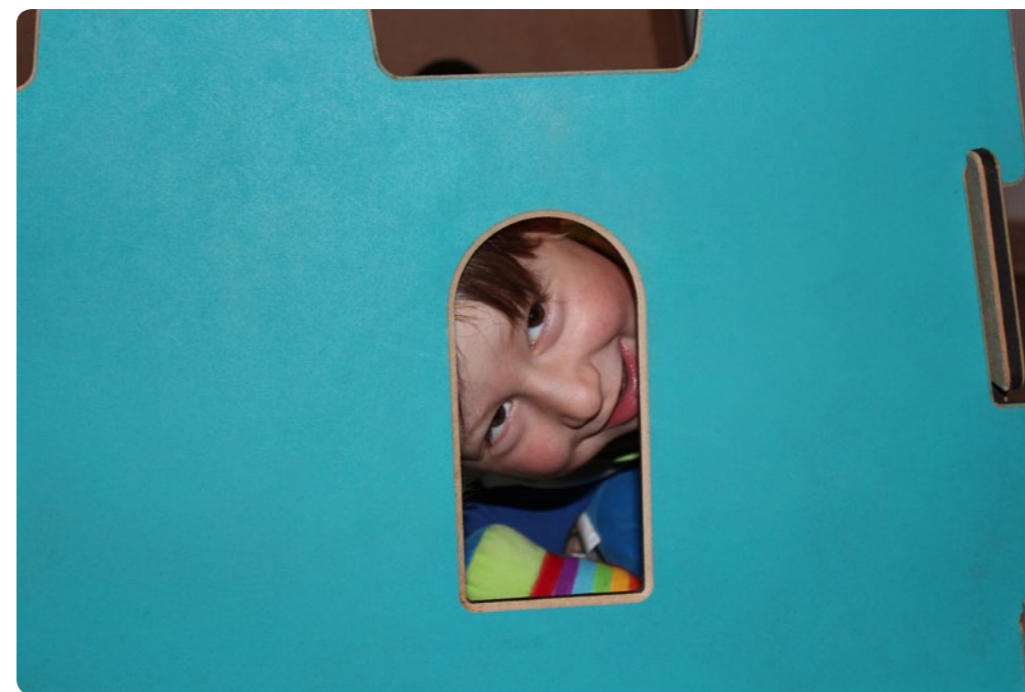
# THE ORCA CHAIR

2012 \ ocadu, toronto \ core studio  
a chair designed to be manufactured from  
one sheet of wiggewood  
no glue or fasteners needed



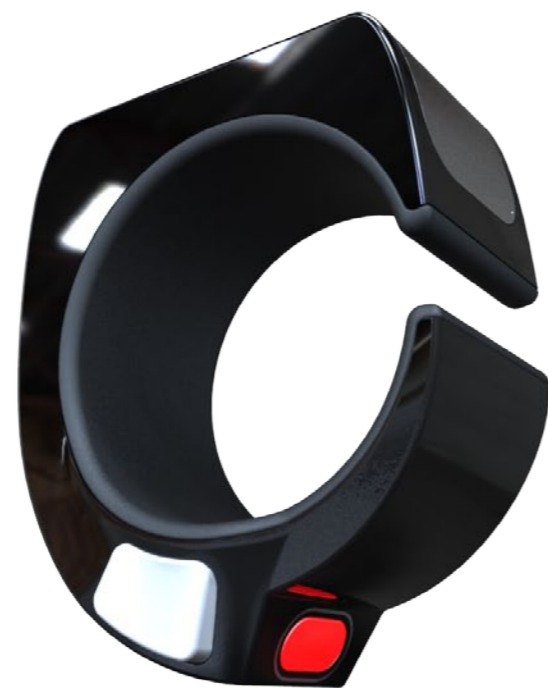
# CASTLE

2013 \ bezalel \ wooden toys \ course sponsored by pasteltoys, israel  
collaboration with konstantin ziman  
mdf \ laser cut \ cnc \ developed for pasteltoys factory's manufacturing capabilities  
flat pack distribution \ no fasteners used \ quick and safe assembly



# THE REALM

2012 \ ocadu, toronto \ core studio 3 \ sponsored by RIM  
with jeremy alter, oskar kwong



## THE CONCEPT

"What if I can get to where I'm going without knowing where I'm going?"

Creates a unique personalized journey in which the user discovers their destination only upon arrival. Uses location, users interests and detailed system data from the blackberry network to inform navigation. The user is spontaneously guided through a series of appealing features throughout the large pan am footprint.

**BlackBerry REALM**

## SPECIFICATION

### Network

- Allow for GPS capabilities.
- Connection to internet to gather information via Facebook, Google, etc.

### NFC (Near field communication)

- To allow users to connect through wireless capabilities.
- Potentially connecting the ring to other electronic devices like their personal phone, laptop, etc.

### Haptic Feedback

- To inform user of status update.

### Universal fitting for many finger sizes.

**LED** to indicate

- Route status
- Network connection.

**Button** to control Laser function.

**Laser Projection**  
Projects various images onto the hand.



**BlackBerry REALM**

## SCENARIO

User wishes to explore an area that they are unfamiliar with

The user initiates Realm by simply placing it on their finger with

Realm interacts with network and system data to determine a set of appealing and appropriate destinations

Realm directs user without the user knowing their destinations

Realm prompts user at various critical route points during the journey

User arrives at destination and either decides to stay or continue on to next set destination

**BlackBerry REALM**

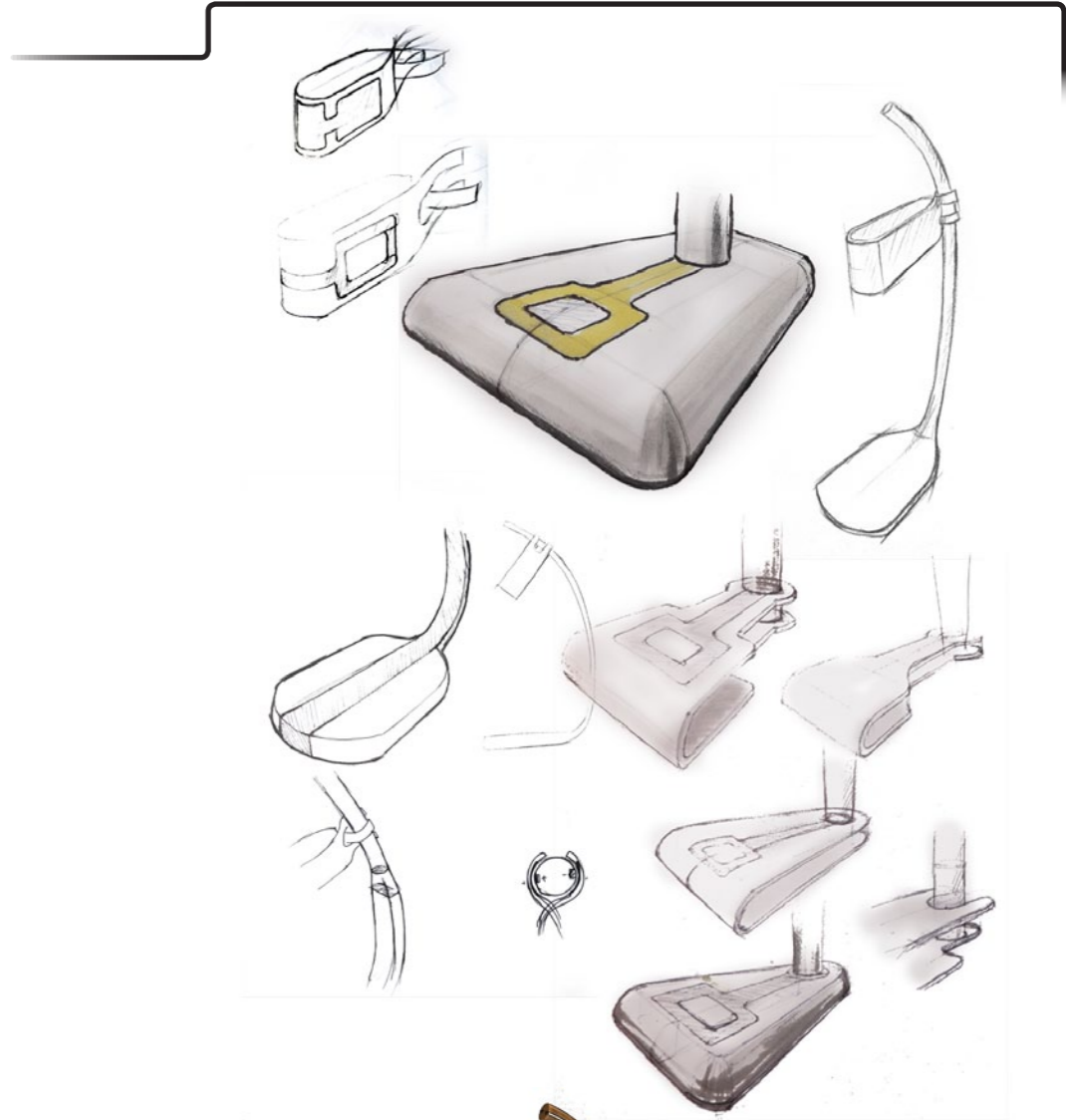
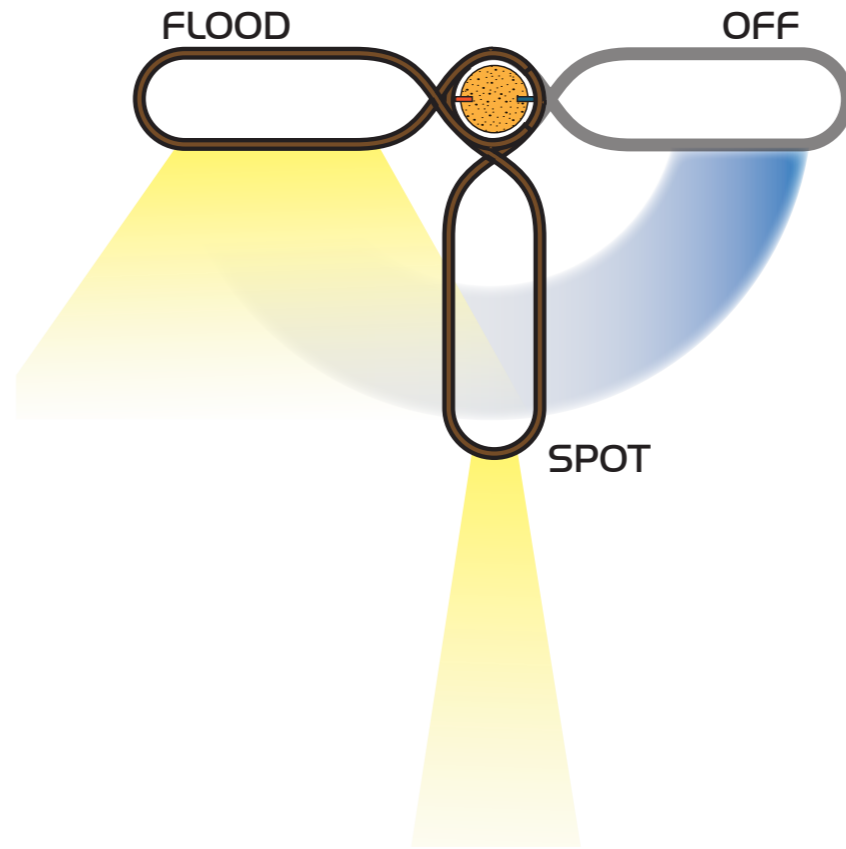


**BlackBerry REALM**



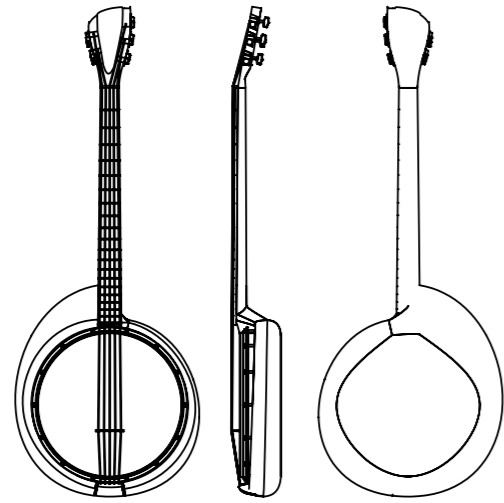
# CLIP LAMI LAMP

2013 \ ocadu, toronto \ furniture design lab  
laminated oak & maple \ bent maple



# BANJO

2011 \ bezalel \ composite materials  
carbon fiber \ aluminium \ rosewood  
applying composites technology to improve the traditional instrument

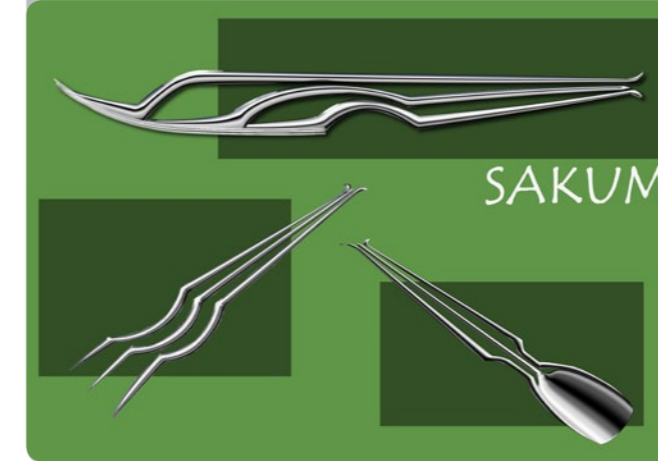


# MISC. PROJECTS

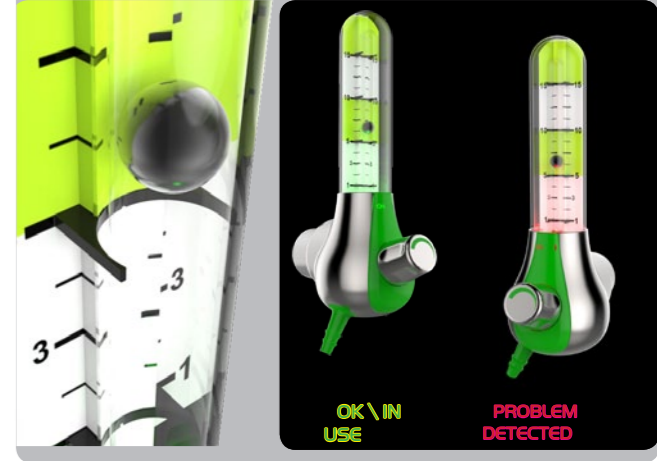
Dustpan / 2010 / cardboard model



concept sketch / 2013



oxygen regulator / 2012



Nutcracker / 2011 / maple & mahogany



sunglasses / 2012 / solidworks



streetballist / 2013 / smartphone app concept

